



**MISTORIA**  
ESTATE AGENTS



## 28 Silton Street Manchester

£895 Per

DONT MISS THIS!!!

FAMILY HOME  
AVAILABLE 25TH MARCH  
VIEWING RECOMMENDED

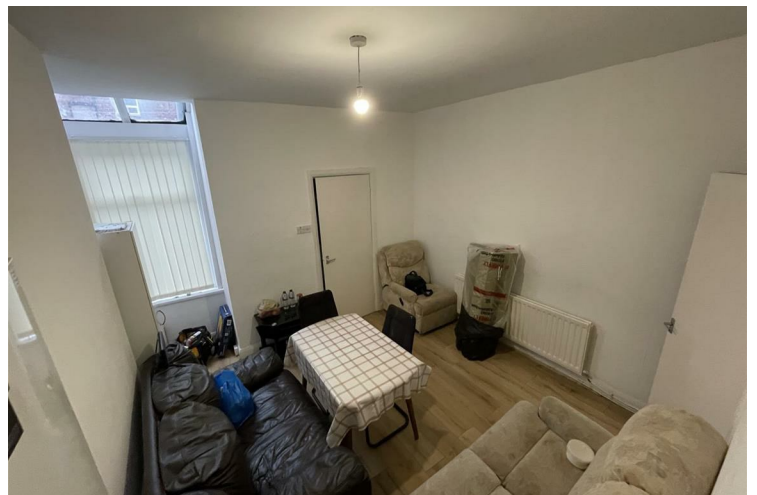
Situated on Silton Street in the vibrant city of Manchester, this charming two-bedroom terrace house offers a delightful blend of comfort and convenience. Spanning an inviting 764 square feet, the property features a well-designed layout that maximises space and functionality.

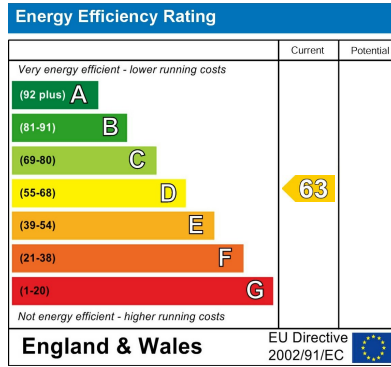


- TWO BEDROOM TERRACE • COMI GAS CENTRAL HEATING • DOUBLE GLAZED UPVC • 2 RECEPTIONS WITH SEPARATE KITCHEN



- CLOSE TO HARPURHEY DISTRICT CENTER • SCHOOLS CLOSEBY • THREE MILES TO MANCHESTER • AVAILABLE MARCH 25TH





Agents Note: Whilst every care has been taken to prepare these particulars, they are for guidance purposes only. All measurements are approximate and are for general guidance purposes only and whilst every care has been taken to ensure their accuracy, they should not be relied upon and potential buyers/tenants are advised to recheck the measurements

Bolton Mistoria  
 108-110 Deansgate  
 Bolton  
 BL1 1BD

01204 800766  
 info@mistoria.co.uk  
 mistoria.co.uk

